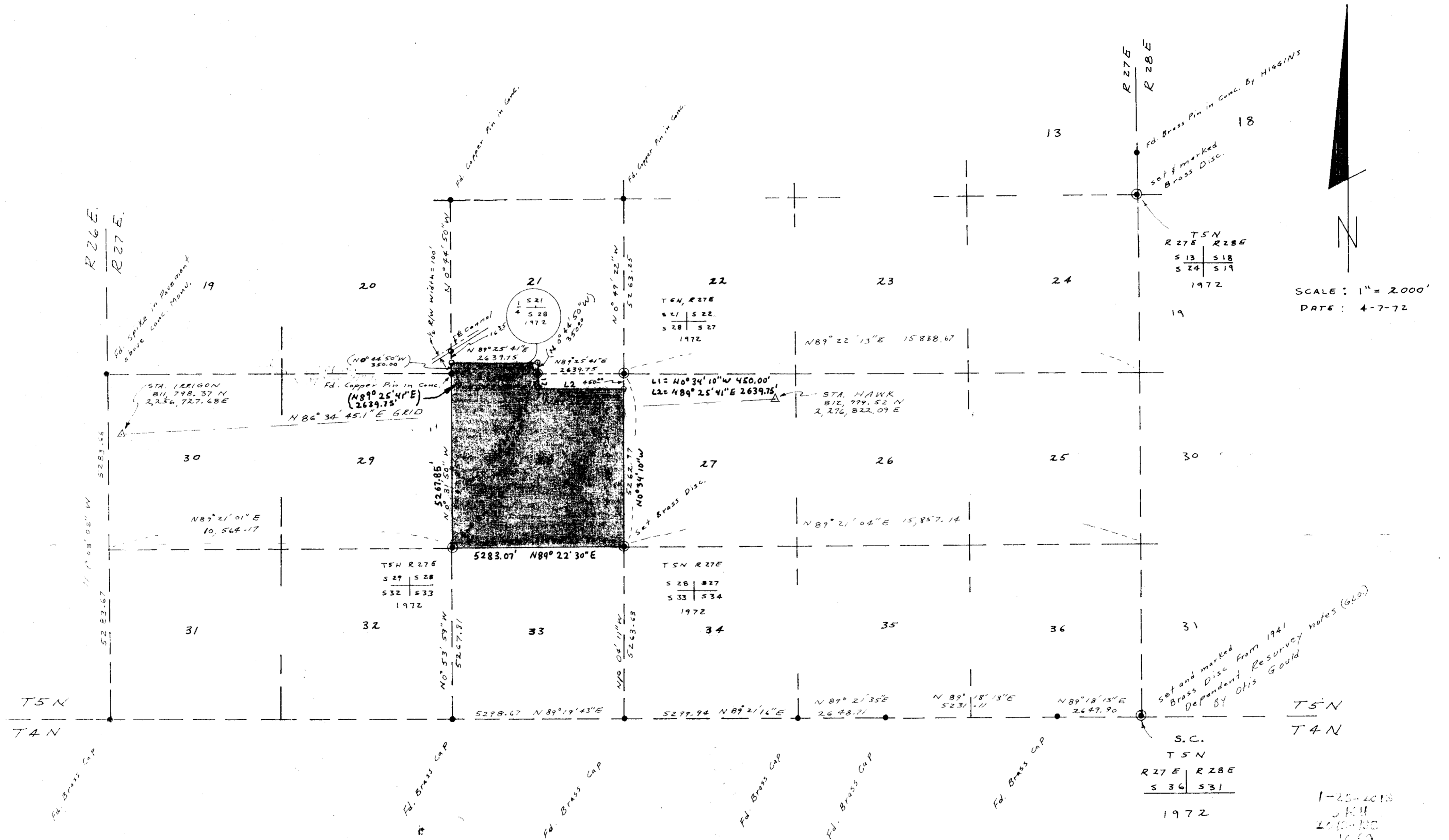
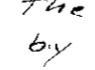


T 5 N, R 27 E.W.M.



NOTES:

- All bearings are Grid bearings based on Oregon Coord. System North Zone.
- The N.E. Corner, S.E. Corner & S.W. Corner was set by Double Proportionate distance method. (Section 28)
- N.E. Corner of section 24 was set by Single Proportionate method.
- All six brass discs set in 2" x 36" iron pipe and stamped as shown.
- The monuments set as shown by this symbol  are 2"x36" Iron Pipe with Hub & nail in top. There are 5 such monuments. One of these monuments set marks the intersection of the west line of Section 21 and the southerly R/W line of the Irrigation canal. (200' R/W)



SURVEY FOR HOWARD STONE  
 STONE HERFORD RANCH  
 HERMISTON, OREGON  
 BY  
 DONALD L. STAEBLER  
 CONSULTING ENGINEER  
 P.O. BOX 91  
 PENDLETON, OREGON

1-25-2018  
 JKH  
 LMS-DC  
 1067